

CLASS VIII

ENGLISH HOMEWORK

HOLIDAYS HOMEWORK

- Do first Ten Unseen passages of BBC.
- Do worksheets of Synonyms, Antonyms, Idioms and Phrases, Homophones on BBC.

SPEAKING ACTIVITY

- **Stand-Up Comedy Challenge!**
(Prepare a short standup comedy act based on school life, family or on any experience)

ART INTEGRATED PROJECT

- Punjab:
• Phulkari Design



- Odisha: **Pattachitra Art**



Write a Note on Origin & Features

Note: Revise Periodic Test-2 on 29 July 2026

- UNIT 2: GREEN WORLD
- Sec A: Trust,
- Sec B: Conservation Ideas,
- Sec C: A Wake-Up Call)
- **Descriptive Paragraph (Place and Person)**
- Advertisement
- Tenses
- Integrated Grammar
- Poetic Devices:
– Personification, Onomatopoeia, Enjambment



Class VIII

Subject: English

HOLIDAYS HOMEWORK

-Do first Ten Unseen passages of BBC.

-Do worksheets of Synonyms, Antonyms, Idioms and Phrases, Homophones on BBC.

SPEAKING ACTIVITY

-Stand Up Comedy Challenge (Prepare a short standup comedy act based on school life, family or daily experience)

ART INTEGRATED PROJECT

Traditional Art Creation :Explore regional art forms by creating:

Punjab: Phulkari pattern design and Odisha: Pattachitra-style drawing

Also, write a brief note (4–5 lines) explaining the origin and features of both art forms.

Note: Revise Periodic Test-2 syllabus to be held on 29 July 2026

-UNIT 2: GREEN WORLD (Sec A-Trust, Sec B -Conservation Ideas, Sec C -A Wake –up Call)

-Descriptive Paragraph (Place and Person)

-Advertisement

-Tenses

-Integrated Grammar

-Poetic Devices- Personification, Onomatopoeia and Enjambment

NANKANA SAHIB PUBLIC SCHOOL, GILL PARK, LUDHIANA
Holidays Homework SUBJECT – MATHS | GRADE –VIII

- 1) Which of the following is not a perfect square?
(a) 361 b) 1156 c) 1128 d) 1681
- 2) The natural numbers lie between 18^2 and 19^2 is
(a) 30 b) 36 c) 35 d) 37
- 3) The sum of $1 + 3 + 5 + 7 + 9 + 11 + 13 + 15 + 17$ is
(a) 78 b) 64 c) 85 d) 81
- 4) The smallest square number which is divisible by each of the numbers 6, 9 and 15 is
- 5) The square root of $\sqrt{100} + \sqrt{676}$
- 6) Find cube root of a) 19683 b) 91125 c) 42875
- 7) Which number should be multiplied with 1323 to make it a perfect cube?
- 8) If $62^2 = 3844$ then 63^2 is equal to
- 9) Find square root by prime factorization and long division method :- a) 7921 b) 2304 c) 106276
- 10) Find a smallest number by which 3072 is multiplied to get perfect square. Also find square root of so obtained number.
- 11) . Find the value of (i) $(3^2 \times 3^4) \div 3^6$ (ii) $(5^8 \div 5^3) \times 5^2$
- 12) . If $3^x = 9^2 \times 27$, find the value of x.
- 13) What is the value of $(3^{-2})^{-5}$
- 14) Simplify $(10^4 \div 5^4)$
- 15) Express each of the following as a product of powers of their prime factors in exponential form.
(i) 648×405 b) 540×192
- 16) Express the following numbers in standard form.
(i) 59,853 ii) 65,950 iii) 34,30,000 iv) 70,04,00,00,000
- 17) With a global human population of about 8×10^9 and about 4×10^5 African elephants, can we say that there are nearly 20,000 people for every African elephant?
- 18) Find out the units digit in the value of $2^{523} \div 4^{24}$? [Hint: $4 = 2^2$]
- 19) Write the given number as the product of two or more powers in three different ways. The powers can be any integers.
(i) 1331^3 ii) 208^8 iii) 32^{-5}
- 20) Calculate and write the answer in scientific notation:
(i) If each person in the city of population 2.3×10^6 had 30 pieces of clothing, find the total number of pieces of clothing.
(ii) There are about 200 million bee colonies in the world. Find the number of honeybees if each colony has about 50,000 bees.
- 21) A tailor has C meters of fabric. He sells LXX meters. How many meters of fabric does he have left? Write your final answer in both Roman and Hindu numerals,
- 22) An Egyptian scribe, using the additive base-10 system, needs to add the values of two piles of symbols. Pile A: 4 symbols for 100, and 7 symbols for 10. Pile B: 3 symbols for 100, and 5 symbols for 10.
(i) What is the value of Pile A in the Hindu number system?

- (ii) What is the value of Pile B in the Hindu number system?
- (iii) What is the total sum of the two piles in the Hindu number system?
- (iv) How many 100 symbols and how many 10 symbols would the final sum have in the Egyptian system?

23) Write 11 and as Gumulgal system of numbers.

24) Write in Egyptian system of numbers. A) 403020 b) 2773 c) 4500

25) Write the following number as base- system :- a) 653 b) 1025 c) 834

26) Write the following numbers as Mesopotamian system:- a) 123 b) 220 c) 3508

27) Write in Mayan system of number :- 362 b) 735

28) Write in roman numerals :- 3324 b) 245 c) 978

29) Find :-a) LX DV b) CDLXXV + CMVVII

30) Subtract the following:-

$$\begin{array}{r} 1. \text{ oooo |||||} \\ - \text{ oo|} \\ \hline \end{array}$$

$$\begin{array}{r} 2. \text{ 𐀀𐀀𐀀𐀀𐀀𐀀oooo |||} \\ - \text{ 𐀀𐀀𐀀𐀀oo|} \\ \hline \end{array}$$

$$\begin{array}{r} 3. \text{ 𐀀𐀀𐀀𐀀𐀀𐀀oooo |||} \\ - \text{ 𐀀𐀀𐀀𐀀𐀀𐀀𐀀𐀀𐀀 ||} \\ \hline \end{array}$$

$$\begin{array}{r} 4. \text{ 𐀀𐀀𐀀𐀀𐀀𐀀𐀀𐀀𐀀𐀀o |||} \\ - \text{ 𐀀𐀀𐀀𐀀𐀀oooooo |||} \\ \hline \end{array}$$

31) Add the following:-

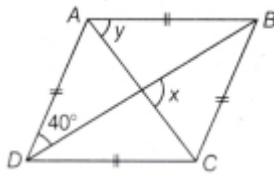
$$\begin{array}{r} 1. \text{ 𐀀𐀀𐀀o |||} \\ + \text{ 𐀀oo|||} \\ \hline \end{array}$$

$$\begin{array}{r} 2. \text{ 𐀀𐀀 |||} \\ + \text{ 𐀀𐀀𐀀o ||} \\ \hline \end{array}$$

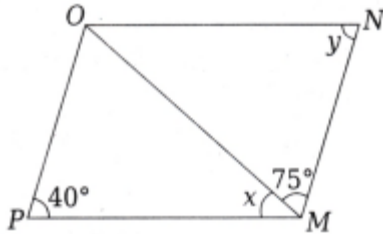
$$\begin{array}{r} 3. \text{ 𐀀𐀀𐀀𐀀𐀀ooooo ||} \\ + \text{ 𐀀𐀀𐀀ooooo |||} \\ \hline \end{array}$$

$$\begin{array}{r} 4. \text{ 𐀀𐀀𐀀ooooo |||||} \\ + \text{ 𐀀𐀀𐀀𐀀𐀀ooooo |||} \\ \hline \end{array}$$

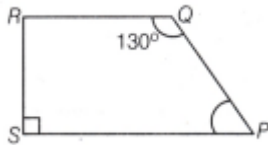
32) In the given figure, if ABCD is a rhombus, then the value of $(x - y)$ is



33) Find $x + y$ in the given parallelogram MNOP.



34) In the given figure, PQRS is a trapezium in $SP \parallel RQ$, then find the measures of $\angle P$ and $\angle R$.



- 35) Using diagonals property construct a parallelogram whose diagonals are 5cm and 8cm.
- 36) Draw a quadrilateral ABCD whose diagonals are of equal length 8cm that bisect each other and intersect at an angle 40 degree.
- 37) Draw a parallelogram with adjacent sides of length 5cm and 6cm and angle of 50 degree is between them.
- 38) Draw a square of side 5cm.
- 39) Construct a kite whose diagonals are of length 6cm 4cm.
- 40) Find The smallest number by which 1944 must be divided to get a perfect square also find square root of obtained number.

NOTE:- ROLL NUMBERS :- TO PREPARE MODEL ON ASSIGNED TOPICS.

(1,4,7,10,13,16,19,22,25,28,31,34,37,40)

ROLL NUMBERS :- TO PERPARE PPT ON ASSIGNED TOPICS.

(3,6,9,12,15,18,21,24,27,30,33,36,39)

HAPPY
Holidays

Science Project & Activity Topics

General instructions:

- Roll no: 1,4,7,10,13,16,19,22,25,28,31,34,37,40. Will prepare science model.
- Roll no: 2, 5,8,11,14,17,20,23,26,29,32,35,38,41. Will prepare Powerpoint presentation.
- Complete your science notebook and read all the chapters thoroughly.
- Solve the assignment

I. Science Model (choose any one topic):

- Science & Technology
- Agriculture and Human Welfare
- Model of Smart City (lights run on solar energy)
- Model of vehicle running on electricity
- Green energy

II. Creating Advertisement

- Prepare pamphlets to promote "Organic Farming" in order to spread awareness on good agricultural practices.

III. Mini Science Documentary or Vlog (Choose any 1 topic)

- Mobile phone screen vs human health
- Hydroponics or Aeroponics
- Ways to conserve water at home
- Healthy habits of adolescents
- Yogurt Making Magic
- Baking Bread with Yeast
- Research it and create a 3–5 minute video explaining it in your own words using drawing / animation apps if possible.

IV. Survey Activity

- Conduct a survey of 10 families in your neighbourhood and find out:
 1. How much polythene they throw in waste every day?
 2. Which type of bags they use when they go to buy vegetables and groceries?
 3. Make a beautiful paper bag using waste items and write a message on it.

You can make video or paste pictures in scrap book

V. Powerpoint Presentation(Choose any one)

- | | |
|-------------------------------|--|
| 1. Combustion and flame | 4. Health : The ultimate treasure |
| 2. Light : Mirrors and Lenses | 5. Pressure,winds, storms and cyclones |
| 3. AI in everyday life | 6. How object float or sink? |

GRADE 8
SCIENCE ASSIGNMENT

1. Which instrument helps us see microorganisms?

- a) Telescope b) Microscope c) Thermometer d) Barometer

2. Yeast is a type of:

- a) Bacteria b) Fungus c) Virus d) Algae

3. Which gas is released during fermentation by yeast?

- a) Oxygen b) Nitrogen c) Carbon dioxide d) Hydrogen

4. Which microorganism helps in curd formation?

- a) Rhizobium b) Lactobacillus c) Amoeba d) Yeast

5. Rhizobium bacteria are found in the roots of:

- a) Mango plants b) Wheat plants c) Leguminous plants d) Rose plants

6. Which of the following is unicellular?

- a) Human b) Yeast c) Mushroom d) Fern

7. Spirulina is a type of:

- a) Fungus b) Protozoa c) Microalga d) Virus

8. Which part controls the activities of the cell?

- a) Cytoplasm b) Cell wall c) Nucleus d) Chloroplast

9. The jelly-like substance inside a cell is called:

- a) Cell wall b) Cytoplasm c) Nucleus d) Membrane

10. Chloroplast is present in:

- a) Animal cells b) Plant cells c) Bacterial cells d) Fungal cells

11. Force is measured using a:

- a) Thermometer b) Spring balance c) Barometer d) Speedometer

12. The SI unit of force is:

- a) Joule b) Newton c) Watt d) Pascal

13. Non-contact forces act:

- a) Only through touch b) Without physical contact c) Only in water d) Only on animals

14. Which force helps a parachute slow down?

- a) Gravity b) Friction from air c) Magnetic force d) Electrostatic force

15. An object floats in water when:

- a) Its weight is greater than water b) Its density is less than water
c) Its size is very small d) It is made of metal

16. A stone sinks in water because:

- a) It is light b) It contains air
c) Its density is greater than water d) Water pushes it down

17. A ship made of iron floats because:

- a) Iron is lighter than water b) Its shape contains air and lowers average density
c) Water has no force d) It moves fast

18. An object that sinks experiences:

- a) No buoyant force b) Buoyant force less than its weight

- c) Buoyant force equal to its weight d) Only magnetic force

19. A needle may float on water due to:

- a) Surface tension b) Gravity c) Magnetism d) Heat

20. If the density of an object is equal to water, it will:

- a) Sink completely b) Float completely above water
c) Stay suspended in water d) Evaporate

CASE STUDY

Read the paragraph and answer the following questions.

During her visit to a village, Reema observed that her grandmother boiled drinking water and covered food properly. Curious, she left a slice of bread uncovered. The next morning, she noticed greenish-black patches on it. Her grandfather explained that invisible living organisms were responsible for the spoilage, and also told her that some microorganisms are useful in everyday life.

Q1) Reema left bread uncovered and found greenish-black patches the next day. What does this incident show about microorganisms?

- (a) Microorganisms can only survive in cold conditions
(b) All microorganisms are harmful and poisonous
(c) Microorganisms grow quickly on moist, exposed food
(d) Microorganisms can only grow inside the human body

Q2) Why is boiling water a useful practice in homes, especially in villages?

- (a) It removes the taste of chlorine
(b) It destroys harmful microorganisms that may be present
(c) It helps cool the water faster
(d) It makes water smell fresh

Q3) Reema's grandfather explained that some microorganisms help in making curd from milk. Which bacteria is mainly responsible for this process?

- (a) Rhizobium (b) Lactobacillus (c) Salmonella (d) Streptococcus

II. A boy kicks a football across a ground. On a smooth cement floor, the ball rolls far, but on a rough sandy surface, it stops quickly. Similarly, if you stop pedalling a bicycle, it gradually slows down. These observations are due to friction, which always acts opposite to the direction of motion. Even air and water exert friction, which is why vehicles like airplanes, ships, and trains are designed in streamlined shapes.



Q1. Why does the ball stop sooner on sand than on cement?

- (a) Sand has less gravity (b) Friction is greater on rough surfaces
(c) Ball becomes lighter (d) Sand absorbs energy

Q2. What is the direction of the force of friction?

- (a) Same as motion (b) Opposite to motion
(c) At right angles to motion (d) Random direction

Q3. Why are vehicles designed with streamlined shapes?

- (a) To reduce weight (b) To reduce air or water resistance
(c) To increase gravitational pull (d) To make them look attractive

III. Pallavi Mam was demonstrating an experiment in his class with the setup as shown in the figure below.



She took an eraser, sharpener, steel spoon, plastic ruler, pencil, compass and rubber band and asked the students to place them on the surface of the water. Students observed that a few objects float on the surface of water while a few sink in water.

Q1. An object floats in a liquid if the buoyant force is:

- a. zero b. greater than its weight
c. less than its weight d. equal to its weight

Q 2. An object sinks in a liquid if the buoyant force is:

- a. zero b. greater than its weight
c. less than its weight d. equal to its weight

Q 3. The buoyant force on an object immersed in a liquid act:

- a. in the vertically upward direction
b. in the vertically downward direction
c. at an angle of 90° to the direction in which weight of the object acts.
d. at an angle of 45° to the direction in which weight of the object acts.

ASSERTION REASON

- (a) Both A and R are true, and R is the correct explanation of A.
(b) Both A and R are true, but R is NOT the correct explanation of A.
(c) A is true, but R is false. (d) A is false, but R is true.

1. Assertion (A): At least two objects must interact for a force to come into play.

Reason (R): A force is defined as a push or pull on an object resulting from its interaction with another object.

2. Assertion (A): A spring balance measures the weight of an object by determining how much the spring stretches.

Reason (R): The stretch caused in the spring of a balance is the same for all objects, regardless of their mass.

3. Assertion (A): Animal cells have vacuole which help the cells to retain their shape.

Reason (R): Chloroplasts contain chlorophyll that helps in photosynthesis.

4. Assertion (A): The three main parts of a cell are cell membrane, nucleus and cytoplasm.

Reason (R): All cells including animal cells has cell wall.

Class VIII

Social Science Holidays homework

(A) Make a model on the following topics:

1: Renewable and Non-renewable resources	Roll No. 2 and 5
2: Hydel project	Roll No. 8 and 11
3: Pollution	Roll No. 14 and 17
4: Solar Panels	Roll No. 20 and 23
5: E.V.M (Electronic Voting Machine)	Roll No. 26 and 29
6: Parliament of India	Roll No. 32 and 35
7: Historical Buildings built by Mughals	Roll No. 38 and 41

(B) Power Point Presentation:

1: India's Electoral System	Roll No. 3 and 6
2: Colonial Era in India	Roll No. 9 and 12
3: Delhi Sultanate and Mughal Empire	Roll No. 15 and 18
4: Natural Resources and Their Use	Roll No. 21 and 24
5: Production and Entrepreneurship	Roll No. 27 and 30
6: The Rise of the Marathas	Roll No. 30 and 36
7: The Parliamentary System of India	Roll No. 39

(C) Complete notebooks with diagrams and activities

(D) Learn and do written practice of syllabus of PT2

- * Ch. 3 - The Rise of the Marathas
- * Ch. 5 - Universal Franchise and India's Electoral System

(E) Solve the assignment in fair notebook:

Chapter-3

* Case Study:

The Marathas are a group of people native to the Deccan plateau, more specifically present-day Maharashtra. They are identified with the language they speak- Marathi- which has had a rich and continued literary history since the 12th century. During the 13th century, most of the Maharashtra was ruled by the Yadava dynasty with Devagiri (present-day Daulatabad) as its capital. In the early 14th century, the Yadava dynasty was overcome by the Khilji Sultanate from Delhi.

- 1: Marathas belong to which area?
- 2: Who ruled Maharashtra during 13th century?
- 3: Who overcame Yadava dynasty?
- 4: What does literary history mean?

* Answer the following questions:

- 1: What was Jagir?
- 2: Why did Shivaji feel the need to establish navy?
- 3: When was Shivaji coronated and which was his formal title after that?
- 4: What was Dakshina-Digvijaya?
- 5: Who is credited with organising the first Pan-Indian anti British Alliance?
- 6: Name the taxes levied by the Marathas.
- 7: Into how many parts the Maratha armed forces were divided? Explain them also.
- 8: What was Rajya Vyavahara Kosha?
- 9: Write a note on Tarabai and Ahilyabai Holkar.
- 10: Who was Ekoji and which area was conquered by him?
- 11: What was the council of ministers called who assisted Shivaji with administration?

12 What is Wagh Nakh?

Chapter - 5

* Case Study:

Elections in India are often referred to as the 'Festival of Democracy' - a time when citizens exercise their right to choose representatives freely, fairly and responsibly. India follows a parliamentary form of government where citizens participate in various levels of elections - Lok Sabha, state legislative assemblies and local bodies. The country is divided into 543 constituencies for the Lok Sabha elections. The elected members of Lok Sabha are known as Members of Parliament (MP's), whereas candidates elected to state assemblies are known as Members of Legislative Assembly (MLA's). India uses the 'First-Past-the-Post' electoral system.

- 1: Why elections in India are referred to as the 'Festival of Democracy' ?
- 2: Which elections are held at the local level?
- 3: What are the elected members to state assemblies called?
- 4: What is the meaning of 'First-Past-the-Post' ?

* Answer the following questions:

- 1: What does Universal Adult Franchise mean?
- 2: How many constituencies are there for Lok Sabha elections?
- 3: What is the meaning of constituency?
- 4: When were women given voting rights in Switzerland?
- 5: Who organises elections in India?
- 6: What is the full form of NOTA and what does it mean?
- 7: Which tasks are performed by Election Commission of India?
- 8: How many Lok Sabha seats are reserved for scheduled castes and scheduled tribes in India?
- 9: What is a coalition government?
- 10: What type of elections are conducted for Rajya Sabha?
- 11: Name the lower house and upper house of the Parliament of India.
- 12: Who is the chairperson of the Rajya Sabha?

✪ਜਮਾਤ -ਔਠਵੀਂ✪

✪HOLIDAYS HOME WORK ✪

- ▶1. ਕੁਦਰਤ ਅਤੇ ਵਾਤਾਵਰਣ ਨਾਲ ਸੰਬੰਧਿਤ ਸਲੋਗਨ ਬਣਾਉ।
- ▶2. ਲੇਖ :-ਕੁਦਰਤੀ ਕਰੋਪੀਆਂ ਜਾਂ ਕੁਦਰਤ ਮਹਿਲ ਕਹਿਰਵਾਨ ।
- ▶ ਲੇਖ:- ਪਾਣੀ ਦਾ ਨੀਵਾਂ ਹੋ ਰਿਹਾ ਪੱਧਰ/ ਪਾਣੀ ਦੀ ਮਹੱਤਤਾ
- ▶ ਲੇਖ ਦਿਸ਼ਾਹੀਣ ਨਵੀਂ/ਪੀੜੀ ਟੁੱਟਦੇ ਸਮਾਜਿਕ ਰਿਸ਼ਤੇ (ਲੇਖ ਯਾਦ ਕਰਕੇ ਕਾਪੀ ਉੱਤੇ ਲਿਖਣਗੇ)
- ▶3. ਪੱਤਰ :- ਤੁਹਾਡੇ ਮਹੱਲੇ ਦਾ ਡਾਕੀਆ ਬੜਾ ਲਾਪਰਵਾਹ ਹੈ ਉਸ ਦੀ ਸ਼ਿਕਾਇਤ ਸੰਬੰਧਿਤ ਅਧਿਕਾਰੀ ਨੂੰ ਪੱਤਰ ਲਿਖੋ।
- ▶ ਪੱਤਰ :- ਆਪਣੇ ਇਲਾਕੇ ਵਿੱਚ ਪੀਣ ਦੇ ਪਾਣੀ ਦੀ ਪਰੇਸ਼ਾਨੀ ਬਾਰੇ ਮਿਊਨਿਸੀਪਲ ਕਮੇਟੀ ਦੇ ਉੱਚ ਅਧਿਕਾਰੀ ਨੂੰ ਪੱਤਰ ਲਿਖੋ।
- ▶4. ਪਾਠ -4,6,7,8 ਦਾ ਅਭਿਆਸ ਕਾਰਜ (ਪ੍ਰਸ਼ਨ ਉੱਤਰ, ਵਾਕ , ਸ਼ਬਦ ਅਰਥ) ਚੰਗੀ ਤਰ੍ਹਾਂ ਯਾਦ ਕਰੋ।
- ▶5. ਅਗੇਤਰ (ਸਫ਼ਾ 80,ਪਹਿਲੀ ਸਤਰ), ਪਿਛੇਤਰ (ਸਫ਼ਾ 82), ਵਚਨ ਬਦਲੋ(ਪੰਨਾ ਨੰ:36,37),ਲਗਾ ਅਤੇ ਲਗਾਖਰ, ਸ਼ਬਦ ਬੋਧ ਦੀ ਪਰਿਭਾਸ਼ਾ , ਬਹੁਆਰਥਕ ਸ਼ਬਦ (ਉੱਚਾ ਤੋਂ ਕੱਚਾ) ,ਸ਼ੁੱਧ- ਸ਼ਬਦ (ਭਾਗ1-5)ਯਾਦ ਕਰੋ।
- *ਉੜੀਸਾ ਅਤੇ ਪੰਜਾਬ ਦਾ ਤੁਲਨਾਤਮਕ ਅਧਿਐਨ*
- * ਭੂਗੋਲਿਕ ਸਥਿਤੀ,
- * ਪ੍ਰਸਿੱਧ ਤਿਉਹਾਰ ,
- * ਪ੍ਰਸਿੱਧ ਸੈਰ- ਸਪਾਟਾ ਥਾਵਾਂ,
- * ਲੋਕ ਨਾਚ ਅਤੇ ਸੰਗੀਤ,
- * ਪ੍ਰਸਿੱਧ ਭੋਜਨ
- ▶6. ਸਵੈ -ਲਿਖਤ ਰਚਨਾ :ਕਿਸੇ ਇੱਕ ਵਿਸ਼ੇ ਤੇ ਸਵੈ -ਰਚਨਾ ਲਿਖੋ। (ਕਹਾਣੀ ,ਚੁਟਕਲੇ ,ਬੁਝਾਰਤਾਂ, ਕੋਈ ਅੱਖੀਂ ਡਿੱਠੀ ਘਟਨਾ ,ਸਫ਼ਰਨਾਮਾ, ਕਵਿਤਾ ਆਦਿ।
- ਨੋਟ :- ੳ ਉਪਰੋਕਤ ਲਿਖਤੀ ਕਾਰਜ ਆਪਣੀ ਪੱਕੀ ਕਾਪੀ ਉੱਤੇ ਸੁੰਦਰ ਲਿਖਾਈ ਵਿੱਚ ਲਿਖੋ।

ननकाना साहिब पब्लिक स्कूल, गिल पार्क, लुधियाना।

 ग्रीष्मावकाश गृहकार्य  विषय -हिंदी. कक्षा -आठवीं

1. पाठ 1 से 4 तक के शब्दार्थ ,प्रश्नोत्तर ,अभ्यास कार्य तथा अभी तक करवाये गए संपूर्ण व्याकरण कार्य की दोहराई करें।
2. पाठ 4 'हरिद्वार'के आधार पर भारत के मानचित्र(नक्शा) पर गंगा नदी का उद्गम स्थल दिखाते हुए उसकी संपूर्ण यात्रा को दर्शाएं।
- 3.भारत के पाँच ऐसे स्थलों के नाम और उनके विषय में पांच-पांच पंक्तियाँ लिखिए जिन्हें विश्व धरोहर स्थल (World Heritage Sites) में शामिल किया गया है।
- 4- जल संरक्षण क्यों आवश्यक है? जल संरक्षण से संबंधित कुछ स्लोगन लिखिए।
- 5-मान लीजिए कि आपने एक मशीन बनाई। जिसका आप प्रचार करना चाहते हैं, इसके लिए एक शानदार विज्ञापन बनाइए ।
- 6-भारतीय संविधान द्वारा मान्यता प्राप्त भाषाओं की एक तालिका बनाइए ।
- 7-शब्द बड़े अनमोल होते हैं- इस विषय पर अपने विचार लिखिए।
- 8- आप किसी पर्वतीय स्थल पर घूमने गए हैं, इस विषय पर एक डायरी लिखिए ।
9. "समाज में नैतिक मूल्यों का पतन "इस विषय पर एक अनुच्छेद लिखें।
- 10.- प्राचीन और आधुनिक शिक्षा प्रणाली में अंतर बताते हुए अपने विचार लिखिए।
11. पठन तथा लेखन कौशल पर आधारित--

भारतेंदु के जीवन का उद्देश्य अपने देश की उन्नति के मार्ग को साफ-सुथरा और लंबा-चौड़ा बनाना था | उन्होंने इसके काँटों और कंकड़ों को दूर किया | उसके दोनों और सुंदर-सुंदर क्यारियां बनाकर उनमें मनोरम फल-फूलों के वृक्ष लगाए | इस प्रकार उसे सुरमय बना दिया कि भारतवासी उस पर आनंदपूर्वक चलकर अपनी उन्नति के इष्ट स्थान तक पहुंच सके | यद्यपि भारतेंदु जी अपने लगाए हुए वृक्षों को फल-फूलों से लदा न देख सके, फिर भी हमको यह कहने में किसी प्रकार का संकोच नहीं होगा कि वे जीवन के उद्देश्य में पूर्णतया सफल हुए | हिंदी भाषा और साहित्य में जो उन्नति आज दिखाई पड़ रही है उसके मूल कारण भारतेंदु जी है और उन्हें ही इस उन्नति के बीज को रोपित करने का श्रेय प्राप्त है |

उपरोक्त गद्यांश के आधार पर निम्नलिखित प्रश्नों के उत्तर लिखिए-

(क) भारतेंदु के जीवन का उद्देश्य क्या था ?

(ख) भारतेंदु ने अपने जीवन में क्या किया ?

(ग) भारतेन्दु जी को किसका श्रेय प्राप्त है ?

(घ) मनोरम का अर्थ बताइए ?

(ङ) प्रस्तुत गद्यांश का उपयुक्त शीर्षक लिखिए ।

12. संवाद लेखन (कोई एक)

- पर्यावरण की बिगड़ती स्थिति को देखते हुए दो पक्षियों के मध्य संवाद की रचना करें।

- अपने बेटे का मोबाइल के प्रति बढ़ता रुझान देखकर चिंतित हो रहे माता-पिता के बीच हुए संवाद को लिखें।

13- कला एकीकृत परियोजना (Art integrated activity)

*(Roll number 1-20)पंजाब और ओडिशा के लोक नृत्य ,लोकगीत तथा मुख्य त्योहारों पर आधारित परियोजना(file) तैयार करें।

*(Roll number 21-40)पंजाब और ओडिशा के ऐतिहासिक और पर्यटन स्थल पर आधारित परियोजना(file) तैयार करें।

Computer Holiday Homework for Grade – 8

Prepare A3 sheet for any one topic from the following topics:

- Types of Network and paste pictures
- * Paste the pictures of Network Hardware
- * Types of Communication Channels
- * Darw the types of Network Topologies with brief description

Revise chapter number 3 and 4 for test after holiday

Holidays Home Work of Art

Class VIII

Dear Students,

As part of the Art Integrated Activity, all students are instructed to prepare one A3 size sheet based on the traditional “Kalamkari Art” of Andhra Pradesh.

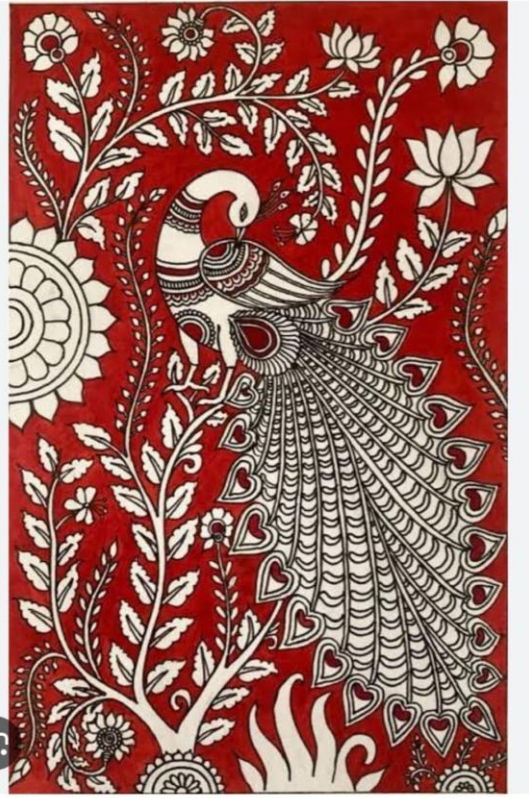
Instructions: • Draw and colour a painting in Kalamkari art style.

- * Use an A3 size sheet only.
- * The artwork should represent the culture, motifs, or traditional patterns of Andhra Pradesh Kalamkari painting.
- * Students may use pencil colours, poster colours, or water colours neatly.
- * Write your name and class neatly on the sheet.
- * Submit the homework after the holidays.

Make your artwork creative, colourful, and neat.

These are examples for reference below:





Thank you.